



c Well-worn dirt path outside of Evergreen Junior High School.



d Typical dirt path section on Hwy 2 looking south.



e Disconnected sidewalk segment transitioning to dirt path.



f Well-worn dirt path leading to disconnected sidewalk segment.



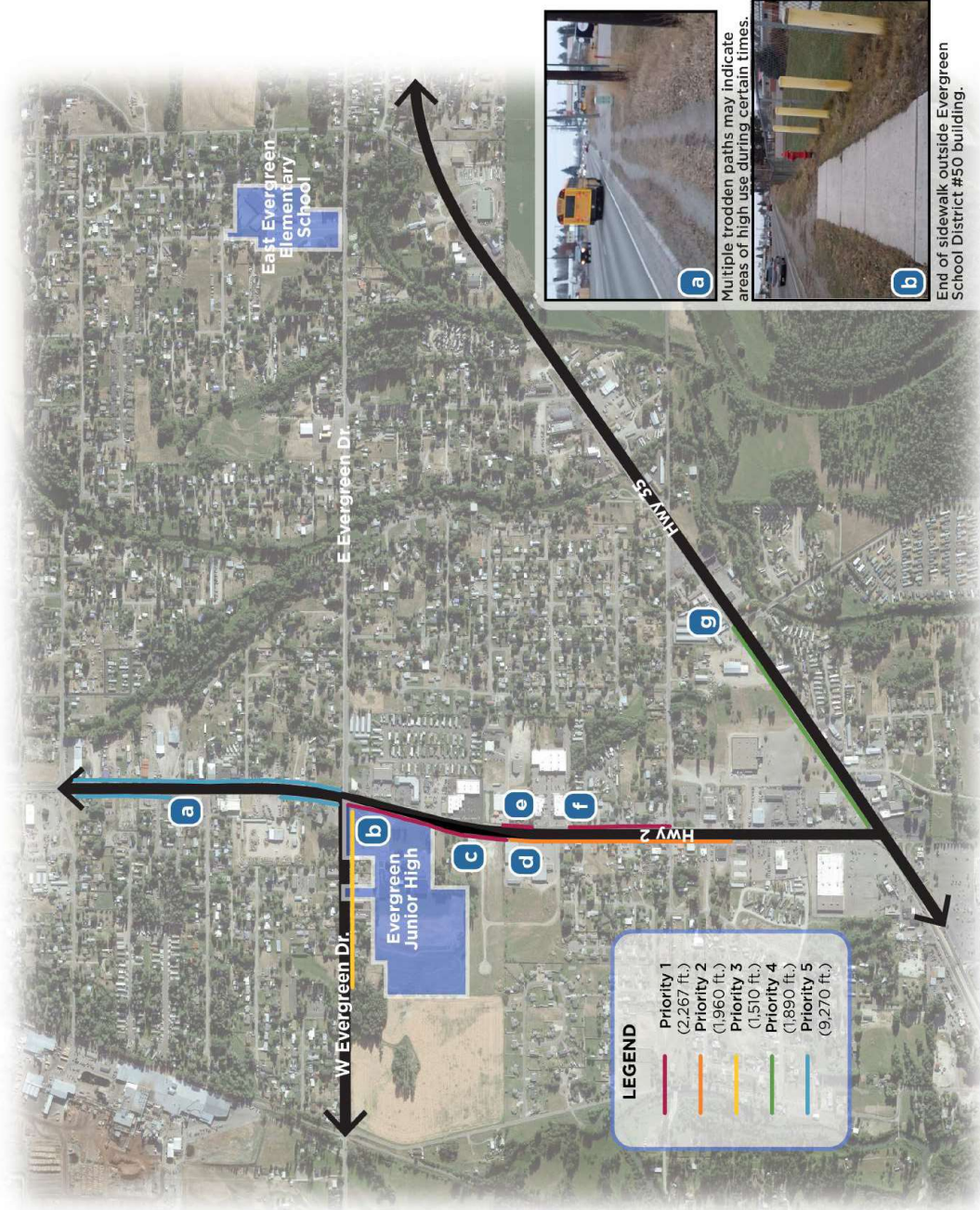
g Dirt path and poor ADA accessibility at intersection.



a Multiple trodden paths may indicate areas of high use during certain times.



b End of sidewalk outside Evergreen School District #50 building.



EVERGREEN SIDEWALKS PROJECT PRIORITY AREAS